

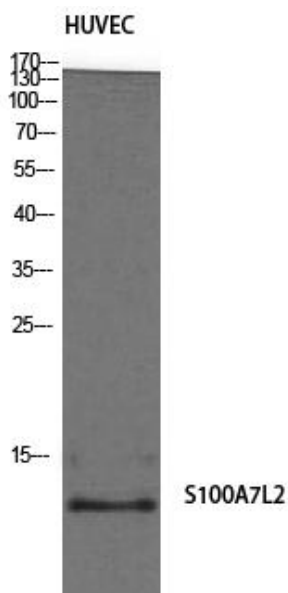


# S-100A7L2 Polyclonal Antibody

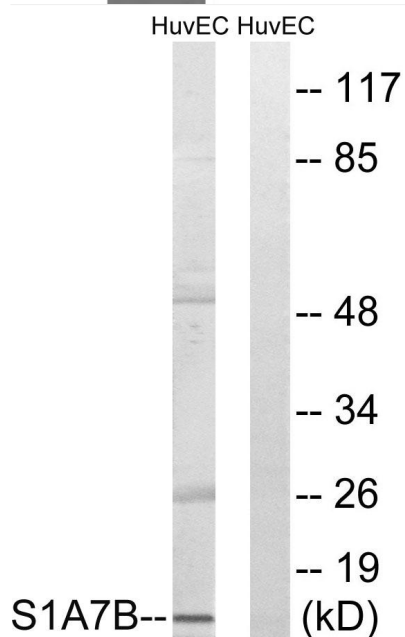
<b>Catalog No</b>	YP-Ab-03182
<b>Isotype</b>	IgG
<b>Reactivity</b>	Human;Rat;Mouse;
<b>Applications</b>	WB;ELISA
<b>Gene Name</b>	S100A7L2
<b>Protein Name</b>	Protein S100-A7-like 2
<b>Immunogen</b>	The antiserum was produced against synthesized peptide derived from human S100A7L2. AA range:38-87
<b>Specificity</b>	S-100A7L2 Polyclonal Antibody detects endogenous levels of S-100A7L2 protein.
<b>Formulation</b>	Liquid in PBS containing 50% glycerol, 0.5% BSA and 0.02% sodium azide.
<b>Source</b>	Polyclonal, Rabbit,IgG
<b>Purification</b>	The antibody was affinity-purified from rabbit antiserum by affinity-chromatography using epitope-specific immunogen.
<b>Dilution</b>	Western Blot: 1/500 - 1/2000. ELISA: 1/10000. Not yet tested in other applications.
<b>Concentration</b>	1 mg/ml
<b>Purity</b>	≥90%
<b>Storage Stability</b>	-20°C/1 year
<b>Synonyms</b>	S100A7L2; S100A7B; Protein S100-A7-like 2; S100 calcium-binding protein A7-like 2
<b>Observed Band</b>	11kD
<b>Cell Pathway</b>	
<b>Tissue Specificity</b>	
<b>Function</b>	similarity:Belongs to the S-100 family.,similarity:Contains 2 EF-hand domains.,
<b>Background</b>	similarity:Belongs to the S-100 family.,similarity:Contains 2 EF-hand domains.,
<b>matters needing attention</b>	Avoid repeated freezing and thawing!
<b>Usage suggestions</b>	This product can be used in immunological reaction related experiments. For more information, please consult technical personnel.



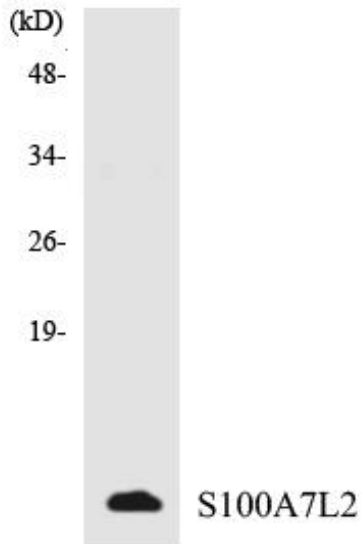
## Products Images



Western Blot analysis of HuvEc cells using S-100A7L2 Polyclonal Antibody



Western blot analysis of lysates from HUVEC cells, using S100A7L2 Antibody. The lane on the right is blocked with the synthesized peptide.



Western blot analysis of the lysates from HepG2 cells using S100A7L2 antibody.

